

9-651/307/437-1017 2009-10 Focus RS DW65c/300c/430c Fuel Pump Installation Guide



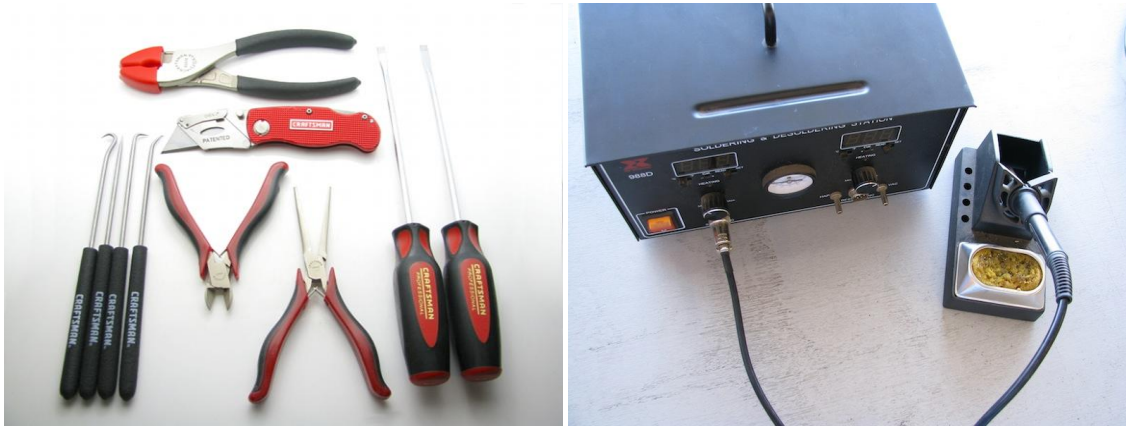
Parts List:

- DW65c/300c/430c, 9-651/9-307/9-437
- Fuel Sock
- 10" Electrical Connector
- 1 3/4" Hose Clamp
- 3-116 O-Rings (x3)
- Super Lube

Mk2 Focus RS DW65c/300c/430c Fuel Pump Install

PLEASE READ – this guide is intended to aid in the installation of our products. It is recommended that factory manuals or instructions are followed to remove the fuel pump assembly from the vehicle. Some instructions in this guide are generic. The factory manual should supersede any contradiction.

Below is a picture of suggested tools that will make the installation process easier.

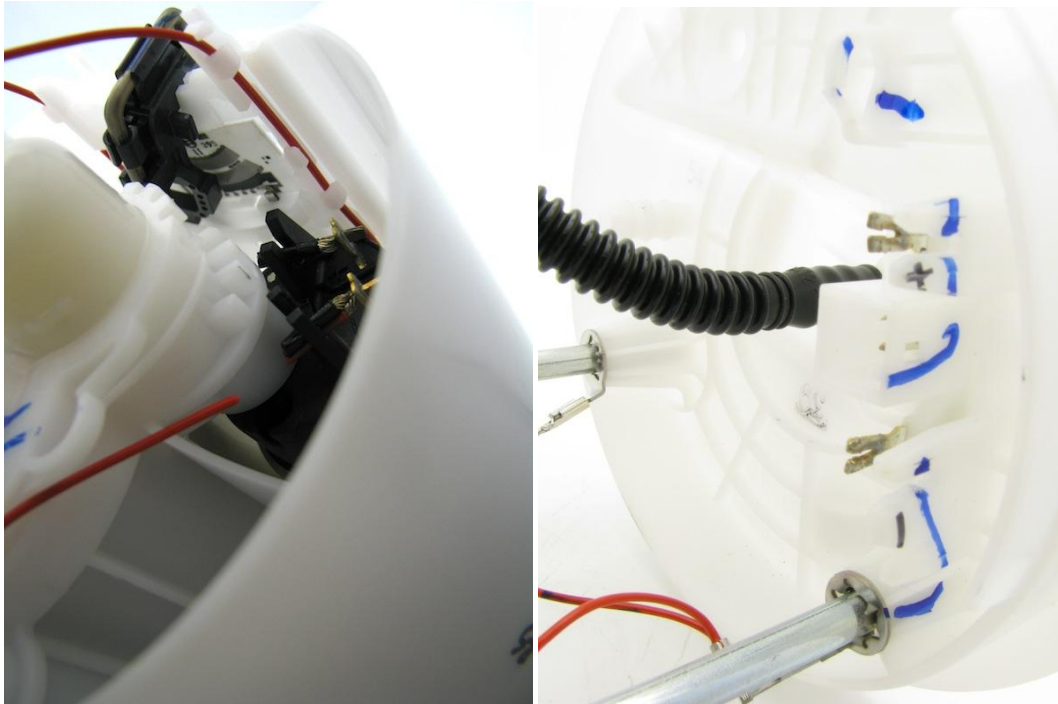


Note – we recommend the leads for the pump electrical connector are connected and soldered to the leads on the pump assembly



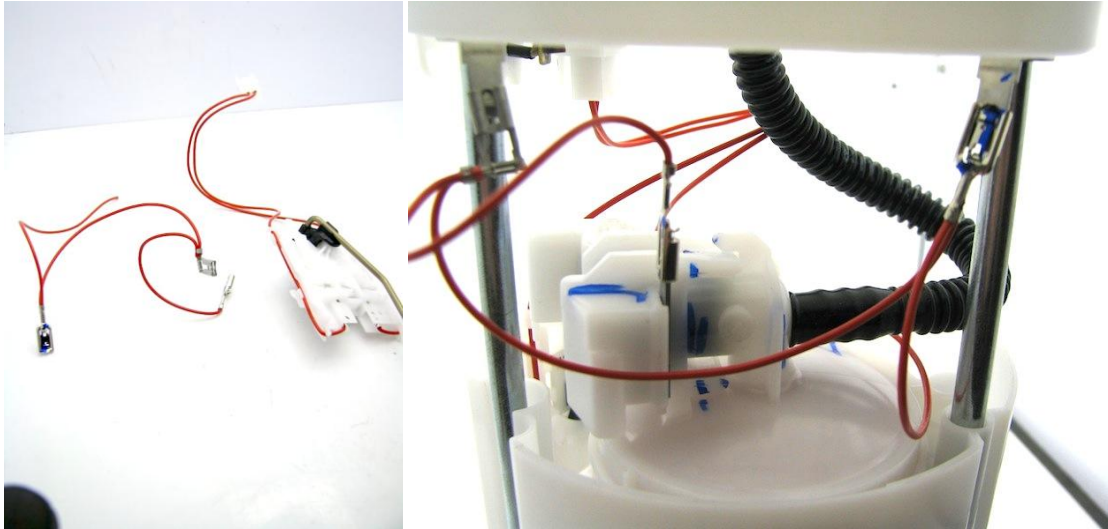
1 – the wire color is reverse of the DW connector – black is positive and red is negative

2 – before disassembling the top of the assembly from the bucket and center, cut the leads going to the pump at the top and cut the red ground from the ground lead



Note – mark the terminals positive and negative for later

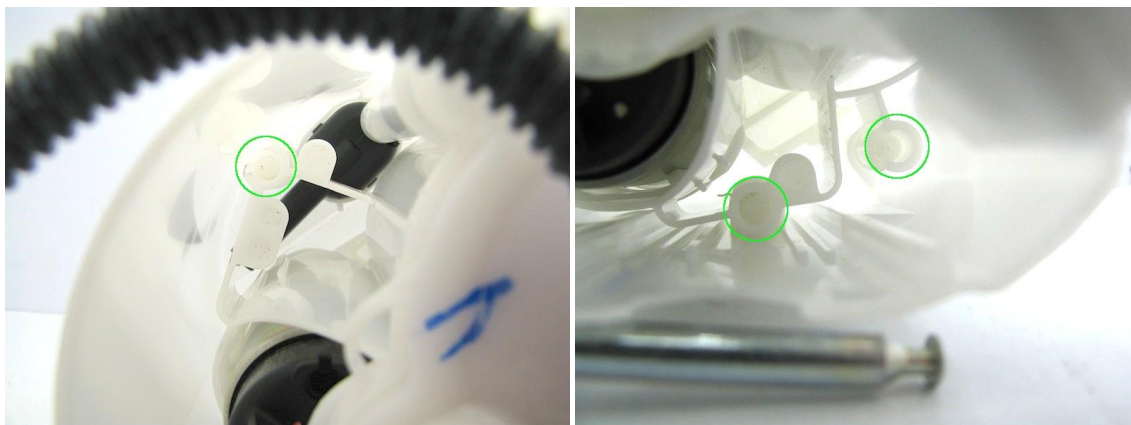
3 – disconnect the fuel level sender from the top and disconnect the ground harness and set to the side and picture for routing reference



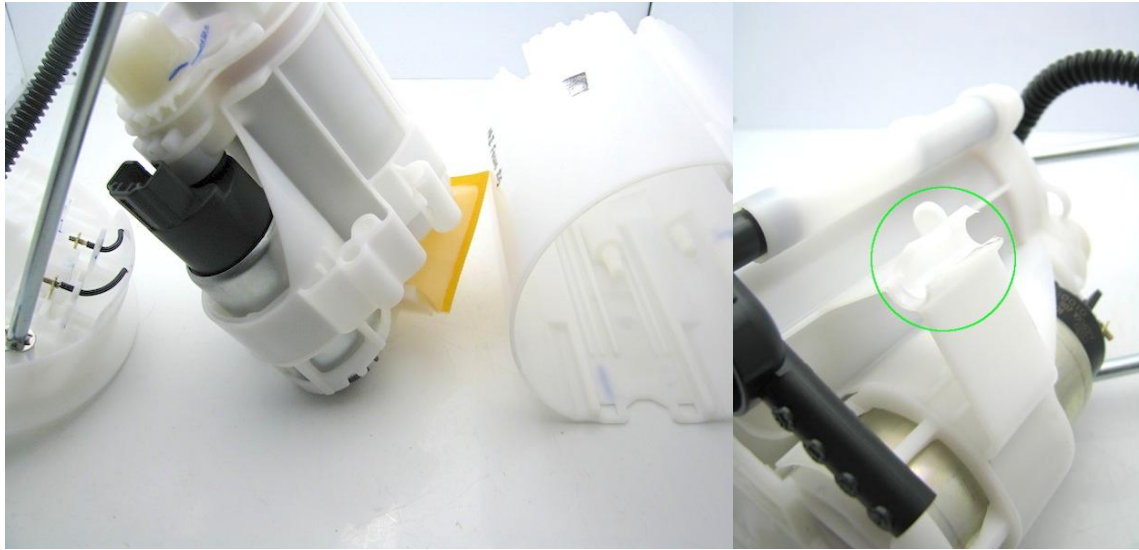
4 – push the top down and remove the c-clip from the upright and pull the top up



5 – to remove the center section, the tabs must be broken (marked in green below). A thin screwdriver or pick placed between the stud and the tab and driven lightly with a hammer will crack the tab without fully separating the tab from the center section

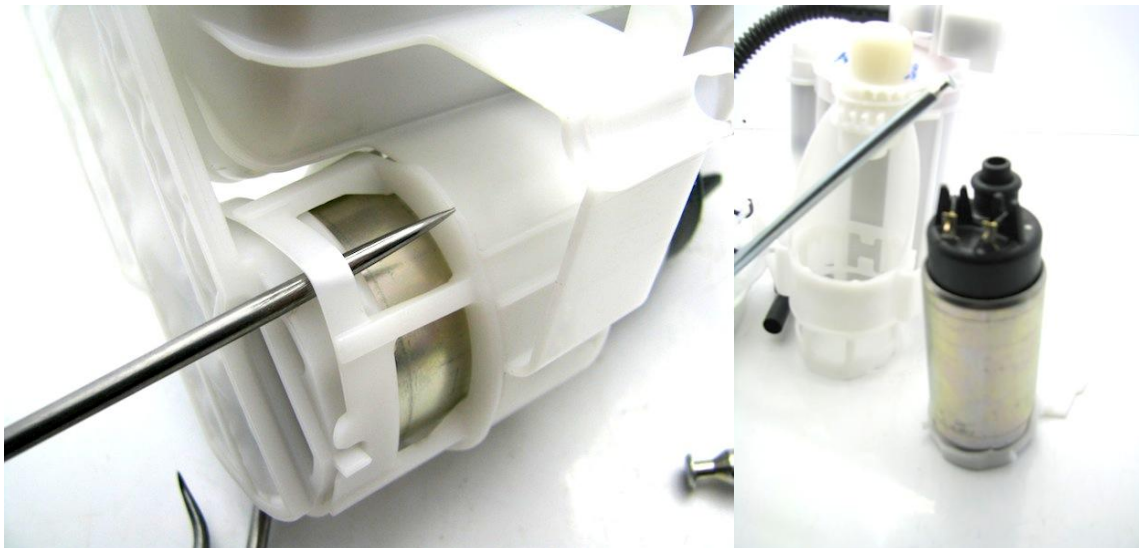


6 – remove the center section from the bucket by pulling up. It will take some force to separate



Note – pictured on the left is an acceptable example of how the broken tab will look

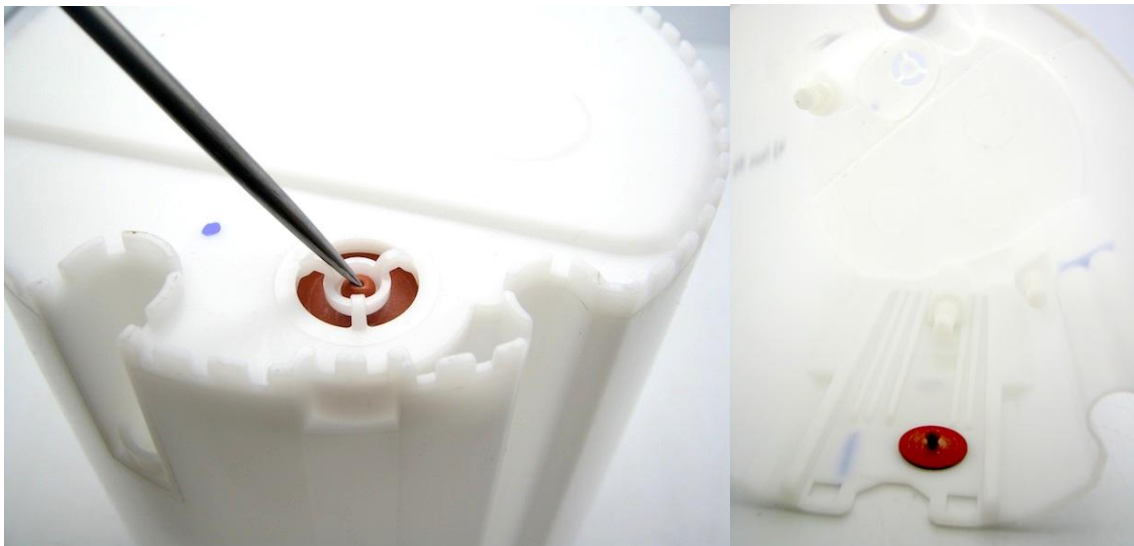
7 – use a pick or screwdriver to remove the fuel sock and pull the pump out



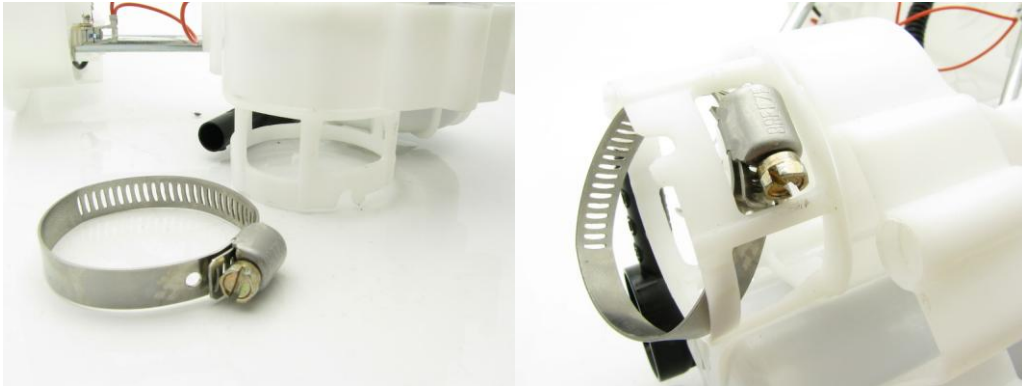
8 – prep the DW65c for installation, it is very important that all 3 o-rings are installed on the pump



9 – remove the diaphragm from the base of the bucket



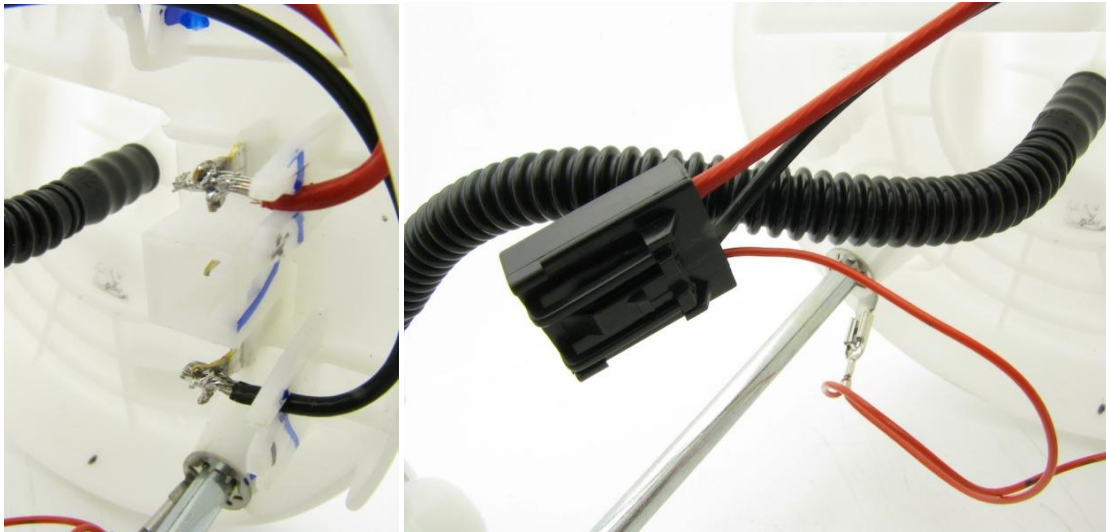
10 – install the clamp in to the pump cage



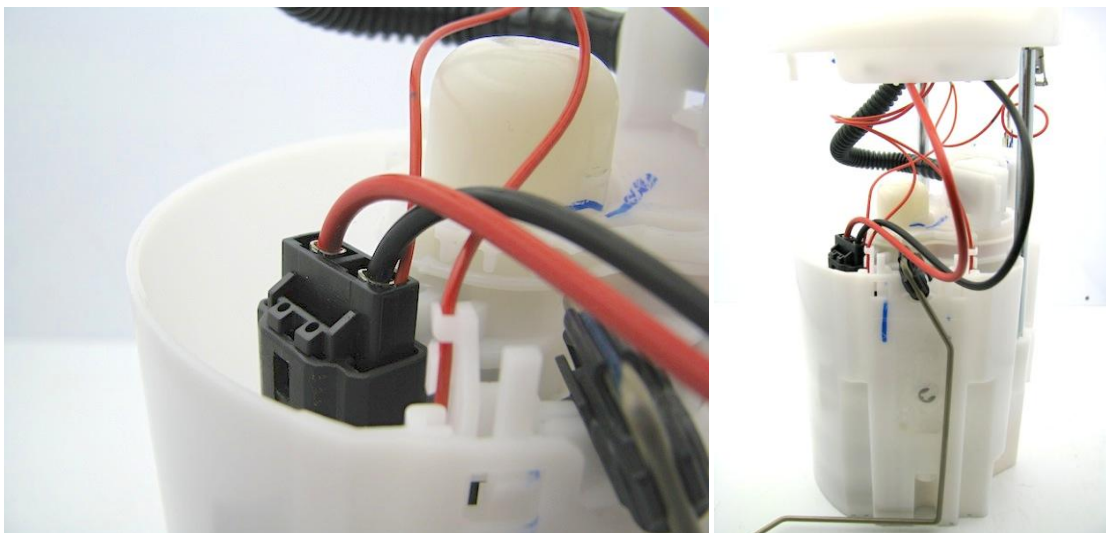
11 – install the DW65c and tighten the clamp. It only requires a minimum amount of torque



12 – solder the electrical connector leads to the top of the assembly and attached the cut ground wire to the NEGATIVE side of the pump lead (black)



13 – reinstall the center section into the bucket, IT WILL NOT CLICK IN PLACE! Reinstall the top and c-clip and plug in the fuel pump connector and reinstall the fuel level sender and plug the connector into the top



14 – reinstall the assembly into the fuel tank and attach a length of hose to the outlet of the pump assembly allowing it to drain into a fuel safe container and prime the fuel pump assembly

15 – cycle the key to the on position as many times as required to prime the pump assembly and evacuate the air introduced during the pump installation process

16 – attach supply line to the outlet of the pump assembly