

# 9-309/439-1039

## 09-14 Cadillac CTS-V DW300c/430c Fuel Pump Installation Guide



### Parts List:

- DW300c-430c, 9-309/9-439 (x2)
- O-Rings (x2)
- Fuel Sock (x2)
- Super Lube

**09-14 Cadillac CTS-V DW300c/430c Fuel Pump Installation Guide****09-14 CTS-V DW300c/430c Fuel Pump Install**

PLEASE READ – this guide is intended to aid in the installation of our products. It is recommended that factory manuals or instructions are followed to remove the fuel pump assembly from the vehicle. Some instructions in this guide are generic. The factory manual should supersede any contradiction.

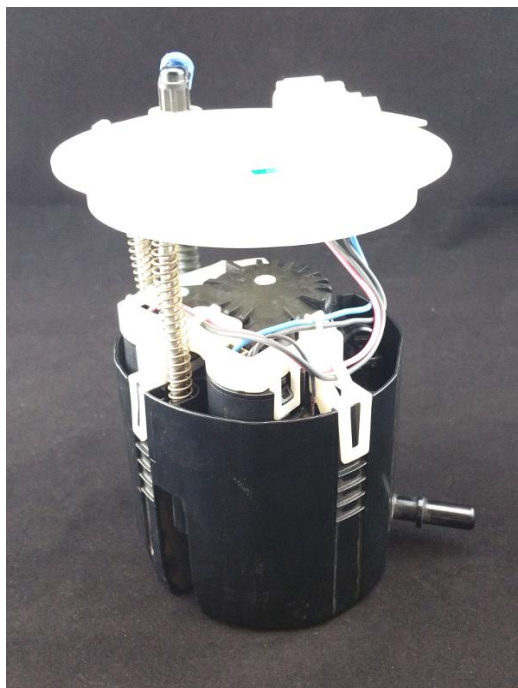
This kit uses PTFE tubing and permanent clamps. Heat from a heat gun, high temperature hair dryer, or boiling water may be used to soften the tubing ends to make installation onto the pump and assembly easier. **DO NOT USE AN OPEN FLAME!** The permanent clamps may be crimped with end cutters or side cutters. PTFE tubing installation video: <https://www.youtube.com/watch?v=6NE6tRE1Kug>

There is a Technical Service Bulletin (TSB) related to this part number and application hosted on the DW site, it is recommended that you read the TSB prior to installation and tuning:

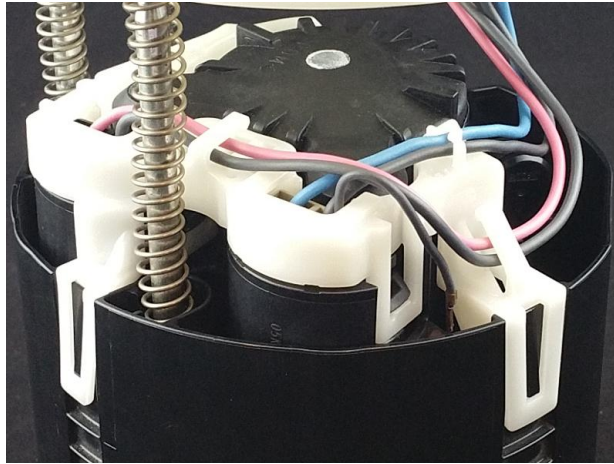
[http://www.deatschwerks.com/images/stories/DW\\_TSB/DW%20TSB-17-04-14.pdf](http://www.deatschwerks.com/images/stories/DW_TSB/DW%20TSB-17-04-14.pdf)

Below is a picture of suggested tools that will make the installation process easier.

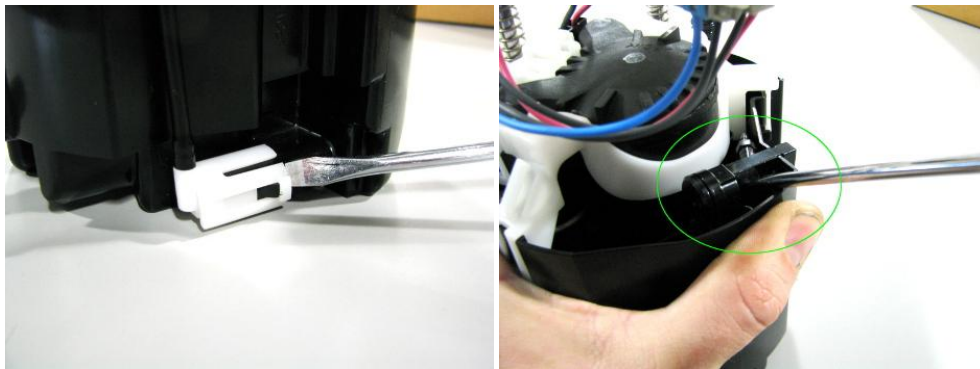




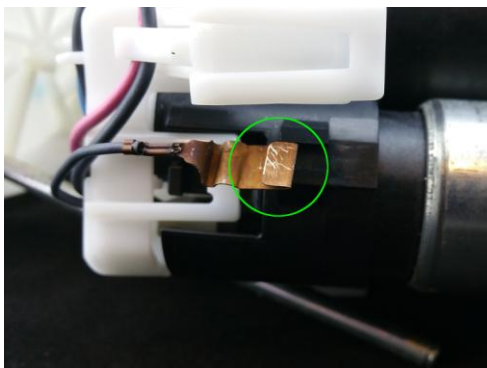
For Wire Routing Reference



1 – separate the center section of the assembly from the bucket by first prying the venturi pump from the outside of the bucket and prying the venturi pump housing up from the assembly (circled in green) using a flat-head screwdriver under the Y-section while bracing the bucket with your free hand. Then, lift the three (x3) tabs around the perimeter. While separating the assembly use caution to not to kink or pull the small hose from the assembly, it is a small fitting and even a moderate force could cause it to break

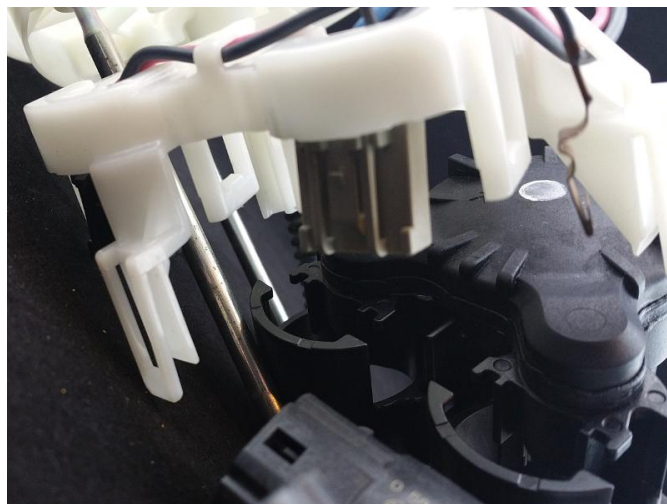
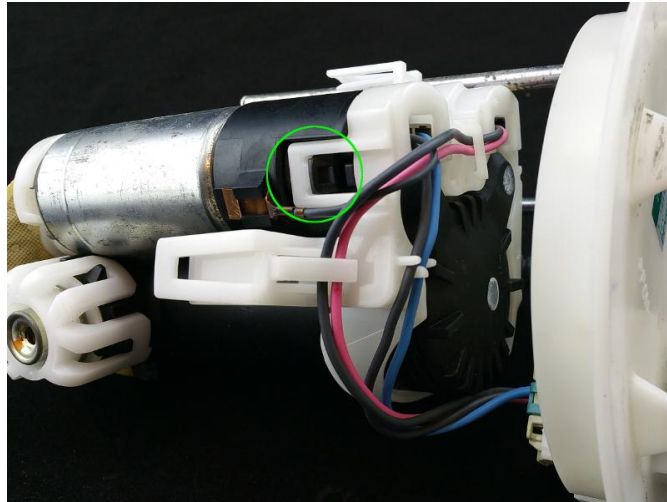


2 – remove the ground from the side of the assembly by pushing the tab (green circle) down and pulling the wire up

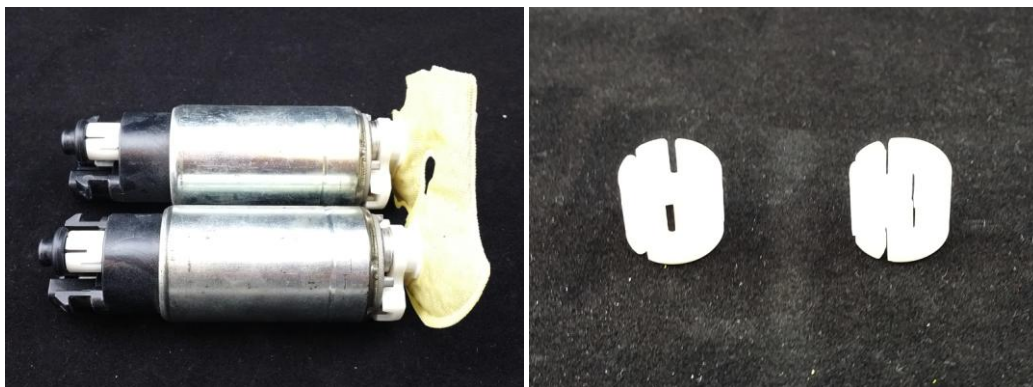


**09-14 Cadillac CTS-V DW300c/430c Fuel Pump Installation Guide**

3 – lift on the four (x4, green circle) tabs holding the white cap onto the black housing and pull the cap away from the housing enough to insert a flat screwdriver in to depress the electrical connector to the pumps in and gently pry up



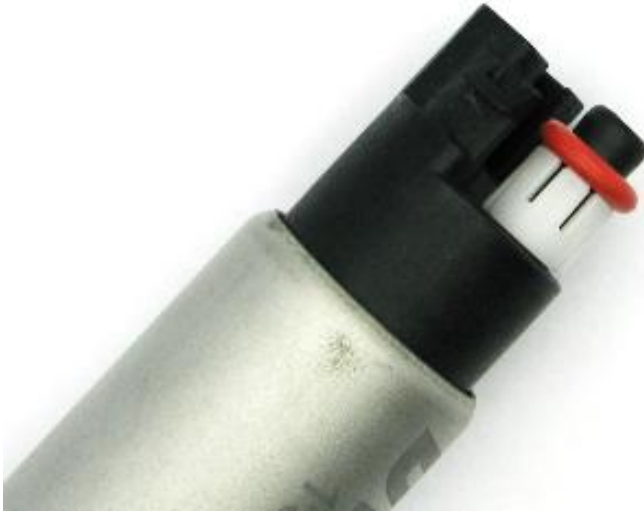
4 – remove the OE pump outlet spacers to be reused on the outlet of the DW300c/430c pumps. The OE fuel sock can be reused, but will require trimming to fit the DW300c/430c pumps



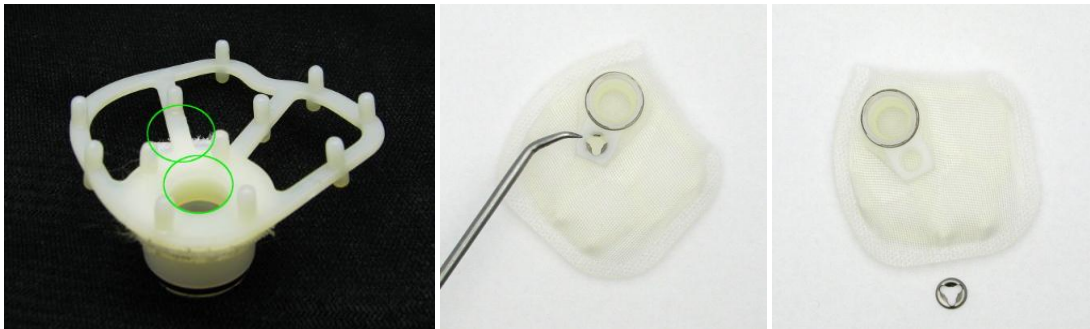


**09-14 Cadillac CTS-V DW300c/430c Fuel Pump Installation Guide**

5 – prep the DW300c/430c by installing the orange o-ring supplied in the kit on the pump outlet on top of the transferred OE outlet spacer



5a – use caution when installing the supplied pre-filters on the base of the DW300c/430c by pushing between the pre-filter support extensions. The press-on retainer nut should be removed from the pre-filter, however, if it is not, it is simple to remove with a pick or small flat-head screwdriver



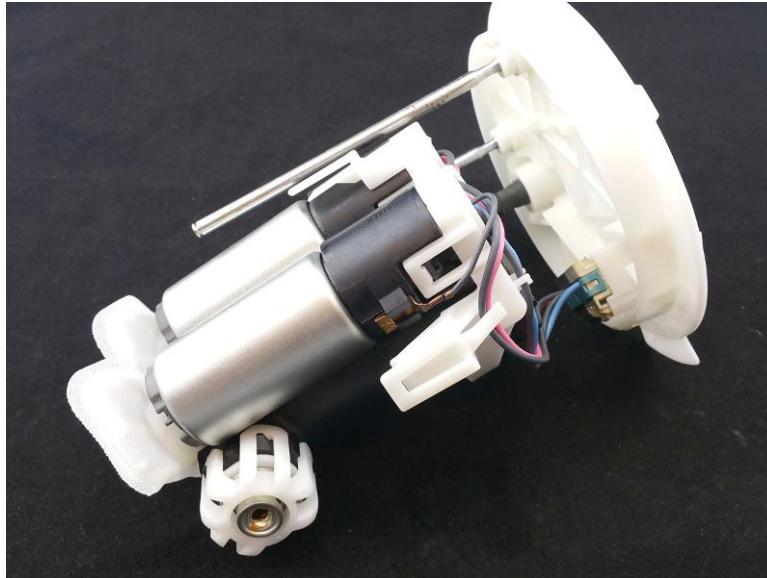


**09-14 Cadillac CTS-V DW300c/430c Fuel Pump Installation Guide**

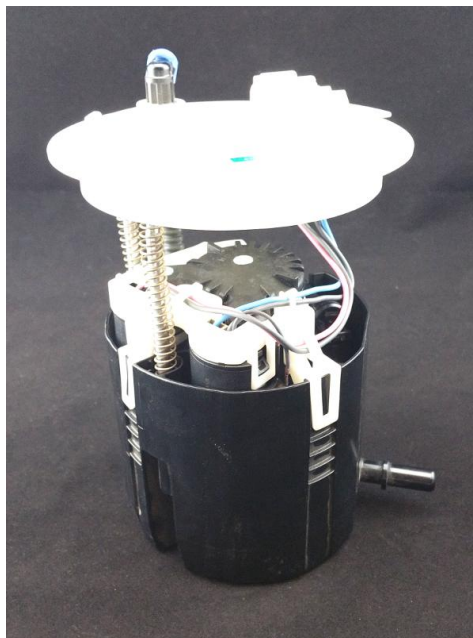
6 – install the DW300c/430c into the center section, plug in the electrical connectors for the pumps, and reinstall cap onto the housing



7 – reinstall the ground into the housing



8 – Install the bucket assembly onto the center section



9 – reinstall the assembly into the fuel tank and attach a length of hose to the outlet of the pump assembly allowing it to drain into a fuel safe container and prime the fuel pump assembly

10 – crank the engine for a period long enough to prime the pump assembly and evacuate the air introduced during the pump installation process

11 – attach supply line to the outlet of the pump assembly