

BAER Your Complete Performance Brake Supplier!

Installation Instructions

Product: Big Claw Rear

Instruction Part Number: 6000782

Vehicle

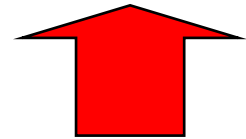
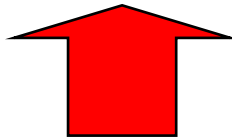
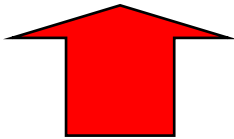
Revision Date: 17 February 2025

Make: GM

Model: Pickup / SUV

Year(s): 99-04 Pickup / 99+ SUV

ATTENTION: *Read this before going further! Returns will not be accepted for ANY installed PART or ASSEMBLY. Use great care to prevent cosmetic damage when performing wheel fit check. If a product must be returned, please contact Baer Customer Service for an RMA Number. Always read and follow the notices below before attempting installation*



Notices – Read and Follow BEFORE ATTEMPTING INSTALLATION

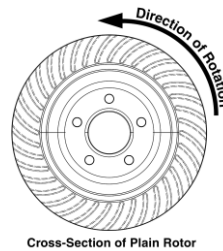
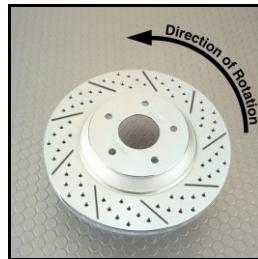
- All installations require proper safety procedures and protective eyewear.
- All installations assume basic mechanical skill and a factory service manual for the vehicle on which the installation is to be performed.
- All references to the “left” side of the vehicle correlate to the driver’s side of the vehicle.
- Any installation requiring you to remove a wheel or gain access under the vehicle requires use of jack stands appropriate to the weight of the vehicle. In all cases, jack stands rated for a minimum of 2-tons is recommended.
- A selection of hand tools sufficient to engage in the installation of these products is assumed and is the responsibility of the installer to have in his/her possession prior to beginning this installation. All installations, which require removal of hydraulic hoses and/or bleeding of the brakes, require appropriate fitting/line wrenches, safety catch can, and protective eyewear. Other than these items, if unique or special tools are required, they will be stated appropriately in the installation step.
- ALWAYS CONFIRM WHEEL FIT BEFORE BEGINNING INSTALLATION OF ANY BRAKE SYSTEM OR “UPSIZED” ROTOR UPGRADE! In addition to checking wheel fitment of this system with the wheel fitment template (available online at www.Baer.com), always place the actual corner assembly or a combination of the caliper assembly on the rotor, and into the actual wheel with great care to prevent cosmetic damage. This procedure will reconfirm proper clearance between the caliper and the wheel before proceeding with the actual installation.

BAER Your Complete Performance Brake Supplier!

- Returns will **not** be accepted for systems that have been partially or completely installed. **Use extreme care when checking wheel fitment to prevent any cosmetic damage of brake components.** Wheel fitment can also be checked before installation using a wheel fitment template supplied at www.Baer.com.



- When installing new Baer rotors, be sure to follow the direction of rotation indicated on the rotor hat area with either an arrow, or an “L” for left, or an “R” for right, or both. “L” or left always indicates the driver’s side of US spec vehicles. Images shown are “L” left rotors:

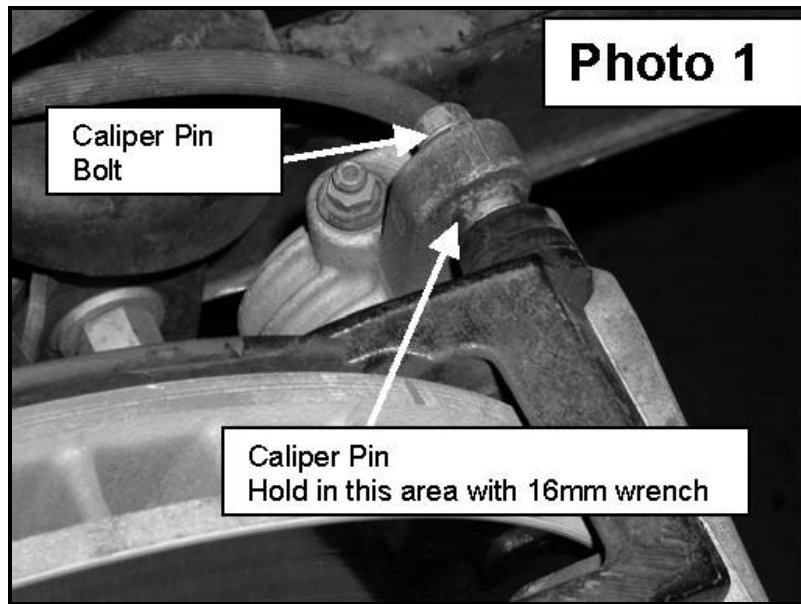


- A proper professional wheel alignment is required for any system requiring replacement of the front spindles, or tie rod ends. Follow factory prescribed procedures and specifications unless otherwise indicated.
- If anything is unclear or the parts require force to install at any point during the installation, stop immediately and consult directly with Baer Technical Staff. Please have these instructions, as well as the part number of the component (part numbers are machined into the brackets) that is/are proving difficult to install, as well as the make, model, and year (date of vehicle production is preferred) of your vehicle available when you call. Baer’s Technical Staff is available from 8:30a.m. - 5:00p.m. Mountain Standard Time (Arizona does not observe Daylight Savings Time) by phone: (602)-233-1411 Monday through Friday.

INSTALLATION:

Removal of Factory Brake Components

1. Remove the caliper from the anchor bracket by gripping the caliper pins with an open-end wrench and using an appropriate socket to remove the caliper pin bolts. **IMPORTANT: Do not disconnect the brake hose.** Place the caliper out of the way but **do not** suspend the caliper from the brake hose, support the caliper to prevent damaging the brake hose. See Photo 1 for reference.



Caliper-to-anchor bolts

2. Remove the factory caliper anchor from the axle housing using an **18mm** wrench or socket. Save these bolts for installation of the new anchor.
3. Remove the factory pads, pins, and pad sliders from the factory caliper anchor. These will be transferred to the new caliper anchor supplied with this system.
4. Remove the factory rotor and thoroughly clean the axle flange and the caliper mounting surface to ensure the new components install properly.

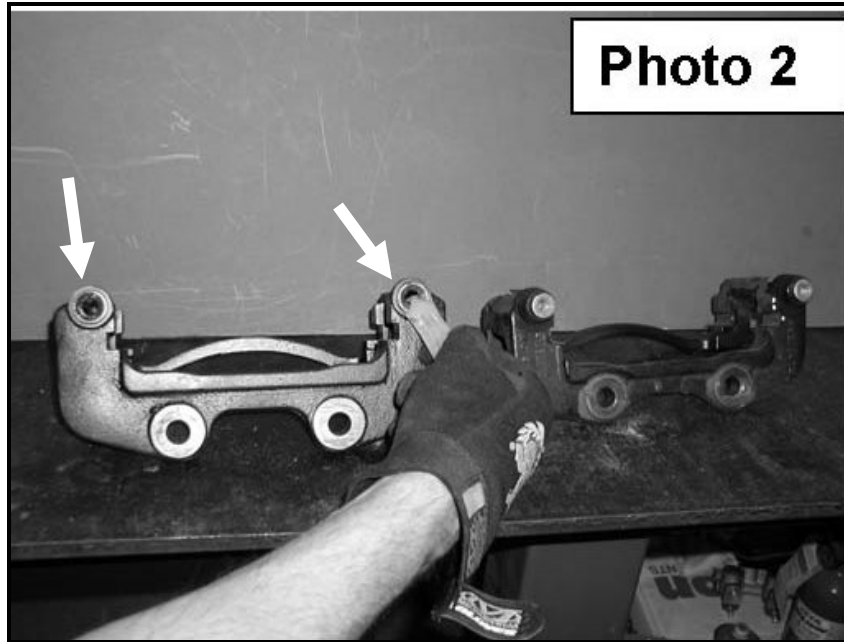
Brake Rotor Installation

5. Install the correct side rotor and secure with three lug nuts and washers to avoid scratching the rotor hat.

Brake Caliper Reinstallation

6. Apply the supplied silicone dielectric grease to the new anchor pin holes, as shown in Photo 2.
7. Install the supplied dust boots onto the anchor and insert the pins.

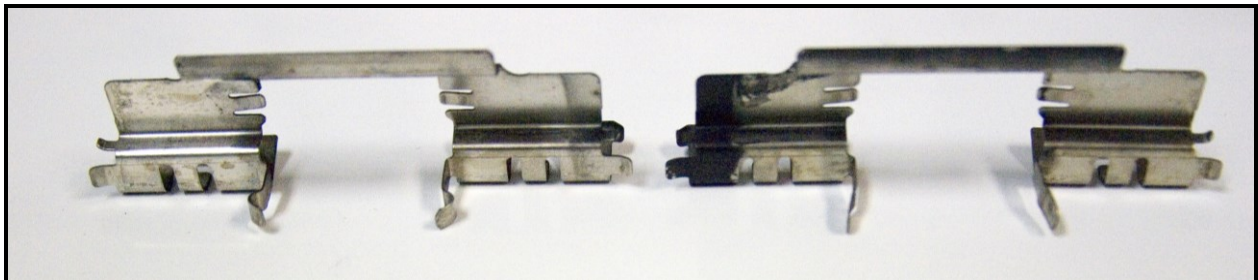
BAER Your Complete Performance Brake Supplier!



Application of silicone grease

07 SUV:

Using straight pliers, flatten the tabs on the caliper sliders to give the rotor adequate clearance. See photo below for reference.



Original slider shown on left. Modified slider shown on right

8. Insert the modified sliders and install the anchors to the axle housing using the original bolts. Torque to 125 ft-lbs.
9. Install the pads (original pads are safe to use if not below usable thickness).
10. Install the caliper and torque the retainer bolts to 12-17 ft-lbs, holding the pins with a **16mm** open ended wrench to prevent them from turning.
11. Repeat steps 1-10 for the other side of the vehicle and recheck all attachment points.

NOTE: It is important to verify wheel fitment for spare wheels. This system is larger than the stock brake system and wheel fitment must be verified for spare wheels.

Refer to Bleeding, Pad Bedding and Rotor Seasoning Procedures contained on a separate sheet, or on www.baer.com. For service components and replacement parts contact your Baer Brake Systems Tech Representative at 602-233-1411, or visit: <https://baer.com/System-Parts-Tools/>.